

Southampton's Green Grid



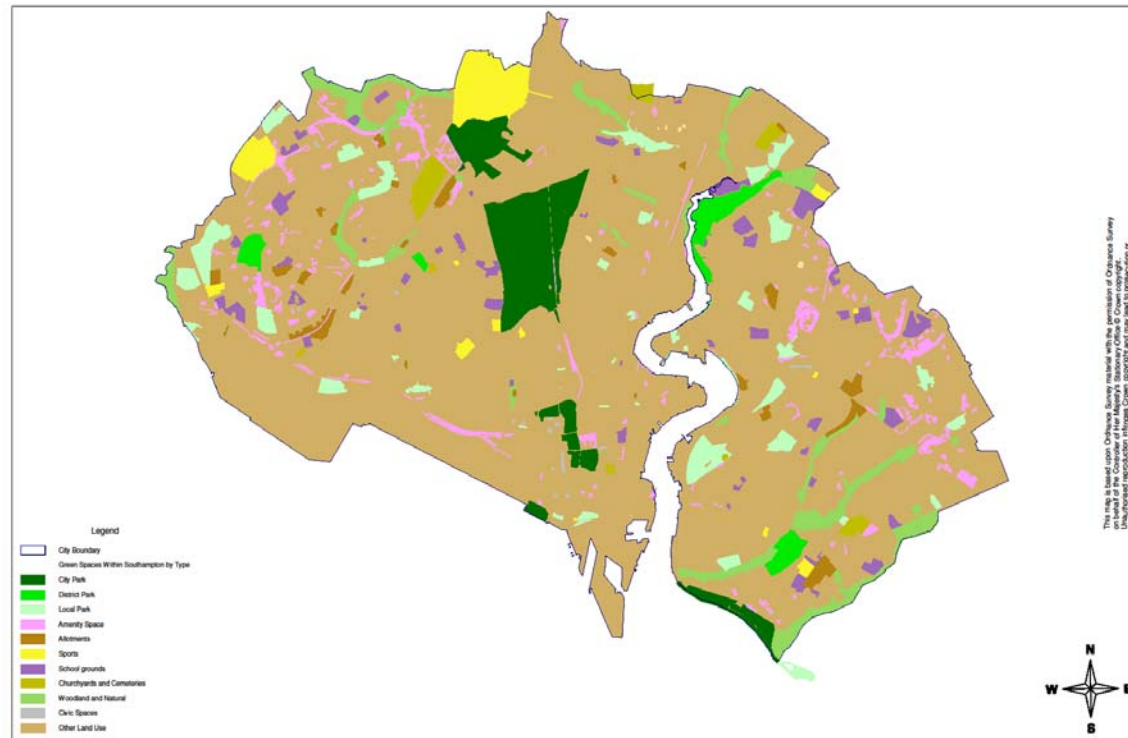
**Lindsay McCulloch
Planning Ecologist
Southampton City Council**

Green Space in Southampton

- The City Council manages over 1100ha of land, which is approximately 20% of the City area.
- This includes:
 - 49 parks
 - 23 allotments
 - 8 greenways
 - 20,000 grass and shrub plots and
 - 80 other green spaces
- 7100 trees on Highway land.



Network of Open Spaces



Green Spaces in Southampton Shown by Their Type when following the Hierarchy

Southampton's Green Space Strategy

- Lead to the creation of a comprehensive policy framework for green spaces.
- To establish a Green Grid network linking key green spaces and providing 'green routes' for people and wildlife.
- To contribute to green infrastructure at the South Hampshire level.

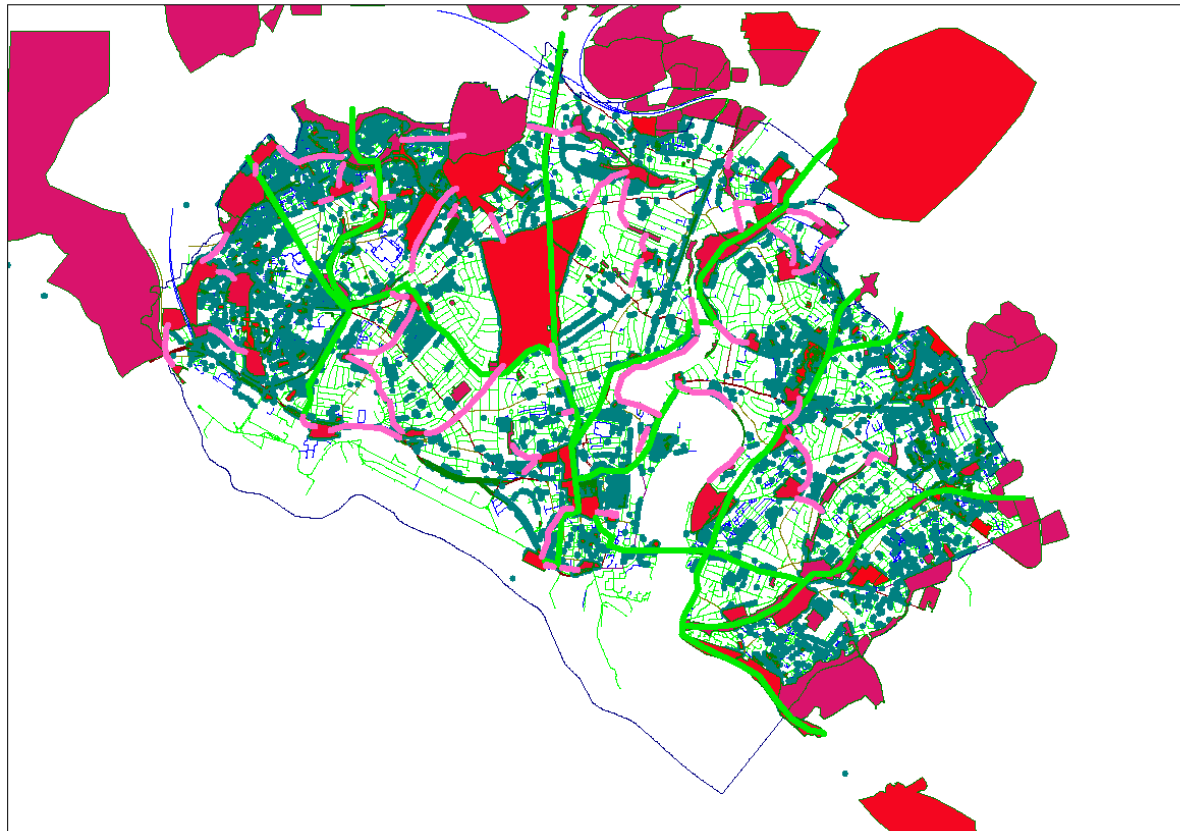


Planning Policy Framework

Core Strategy

- **Policy CS 21 – Protecting and Enhancing Open Space**
 - Safeguarding and, when opportunities arise, extending the green grid;
- **Policy CS 22 - Promoting Biodiversity and Protecting Habitats**
 - Safeguarding and extending the existing Green Grid to provide a network of wildlife corridors and stepping stones between areas of green space within the city and linking to the surrounding countryside;

Preliminary Map of the Green Grid



Initiatives Supporting the Green Grid

- Urban Canopy Project.
- GRaBS Project - Climate Change Adaptation Action Plan.
- Green Space Factor.

