



# Delivering our duty : Planning for biodiversity in Hampshire

Friday 9<sup>th</sup> July 2010

---

## Measuring Performance : National Indicator NI 197

**Nicky Court**  
**Centre Manager**  
**Hampshire Biodiversity Information Centre**



Hampshire Biodiversity  
Information Centre



HAMPSHIRE  
BIODIVERSITY  
PARTNERSHIP



## What is National Indicator 197?

---

NI 197 is simply the “proportion of Local Sites where positive management has been or is being implemented”

[Local Sites = Sites of Importance for Nature Conservation]

NI 197 measures the performance of local authorities at protecting and improving their local biodiversity.

It is a national indicator for HCC and its partner organisations which include District Councils. HCC reports on behalf of District Councils.

Good performance is based on a year by year increase in the indicator against a baseline

## Sites of Importance for Nature Conservation ;

---

- Importance of locally important wildlife sites first recognised in PPG9 in 1994
- The Hampshire SINC system is administered by HBIC on behalf of the BAP (Local Sites) Partnership.
- On-going programme of survey & review to support LDFs and to inform/monitor land use decisions
- Identification of new SINC approved by SINC Panel
- SINC can be of equal quality to SSSIs, they support UK Priority Habitats & Species which under the NERC Act S41: are known as "Habitats and Species of Principle Importance in England"), plus local BAP species
- 3,787 SINC by 2010 (9% Hampshire land cover)
- No legal protection





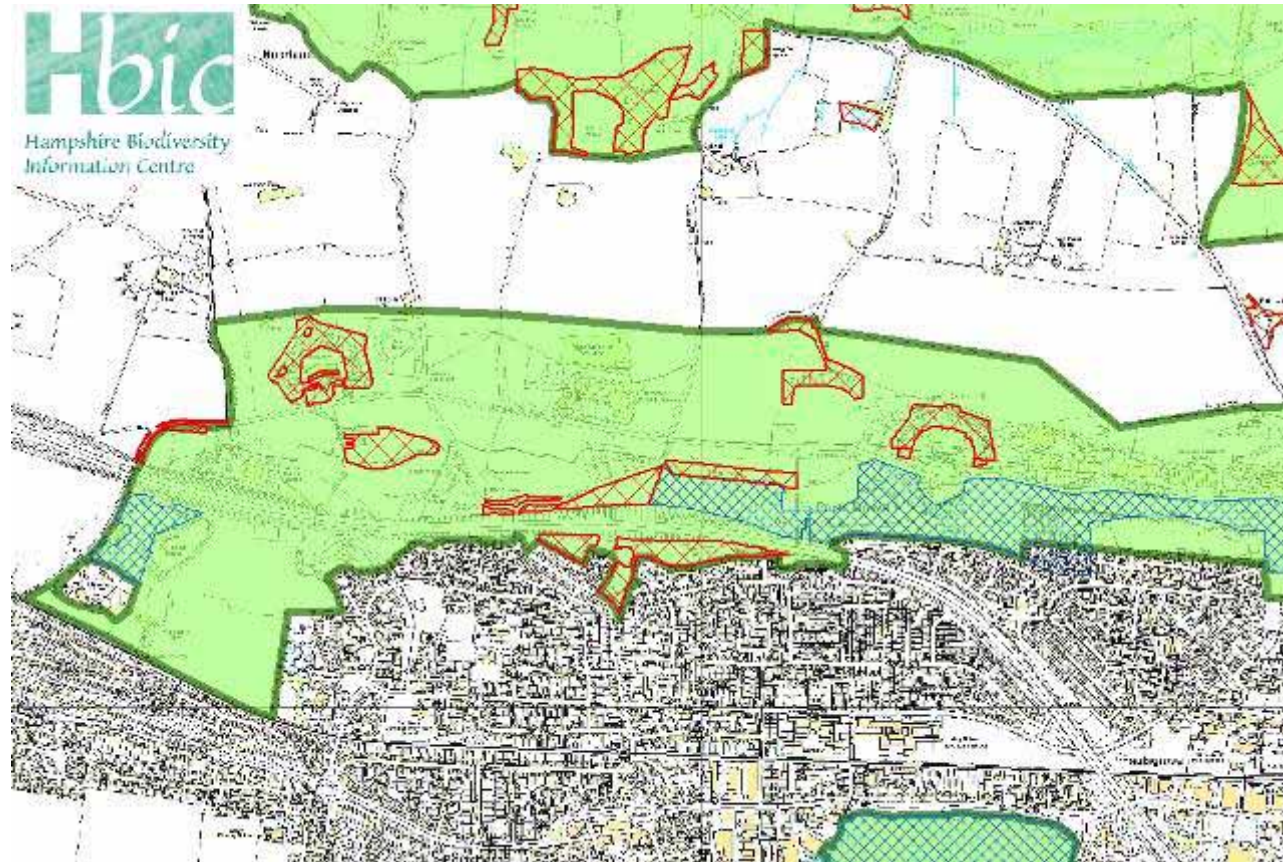
## The value of SINCs

---

- Provide widely distributed refuges for most of our wildlife
- Provide the building blocks necessary for landscape scale restoration
- Valuable as green infrastructure – providing linkages, buffers, stepping stones
- Community value – quality of life, health, well-being, education, research

## SINCs : Building blocks in the Landscape

---





## How do we measure the number of SINCs receiving positive management?

---

- Key sources of information :
  - 'Public' landowners
  - Land Management Advisors
  - Agri-environment/Woodland grant scheme data
  - HBIC Field surveys – c150 SINCs/year
- Approximately 50 organisations and 100 individuals engaged with NI197 feeding in results
- Possible to get all four sources of data reporting on a single SINC
- Increase in number of SINCs receiving positive management may actually be an increase in state of knowledge



## Measuring NI 197 : Evidence required

---

- Need to know - type of management, date of observation and observer, or scheme reference
- The management must have been observed/undertaken during past 5 years
- The management must be substantive and relevant to the feature for which the SINC is designated
- All agri-environment scheme and woodland grant scheme data is assessed against the SINC's data to ensure options match habitats. A large number of polygons are individually scrutinised to ensure the management options are relevant and beneficial.



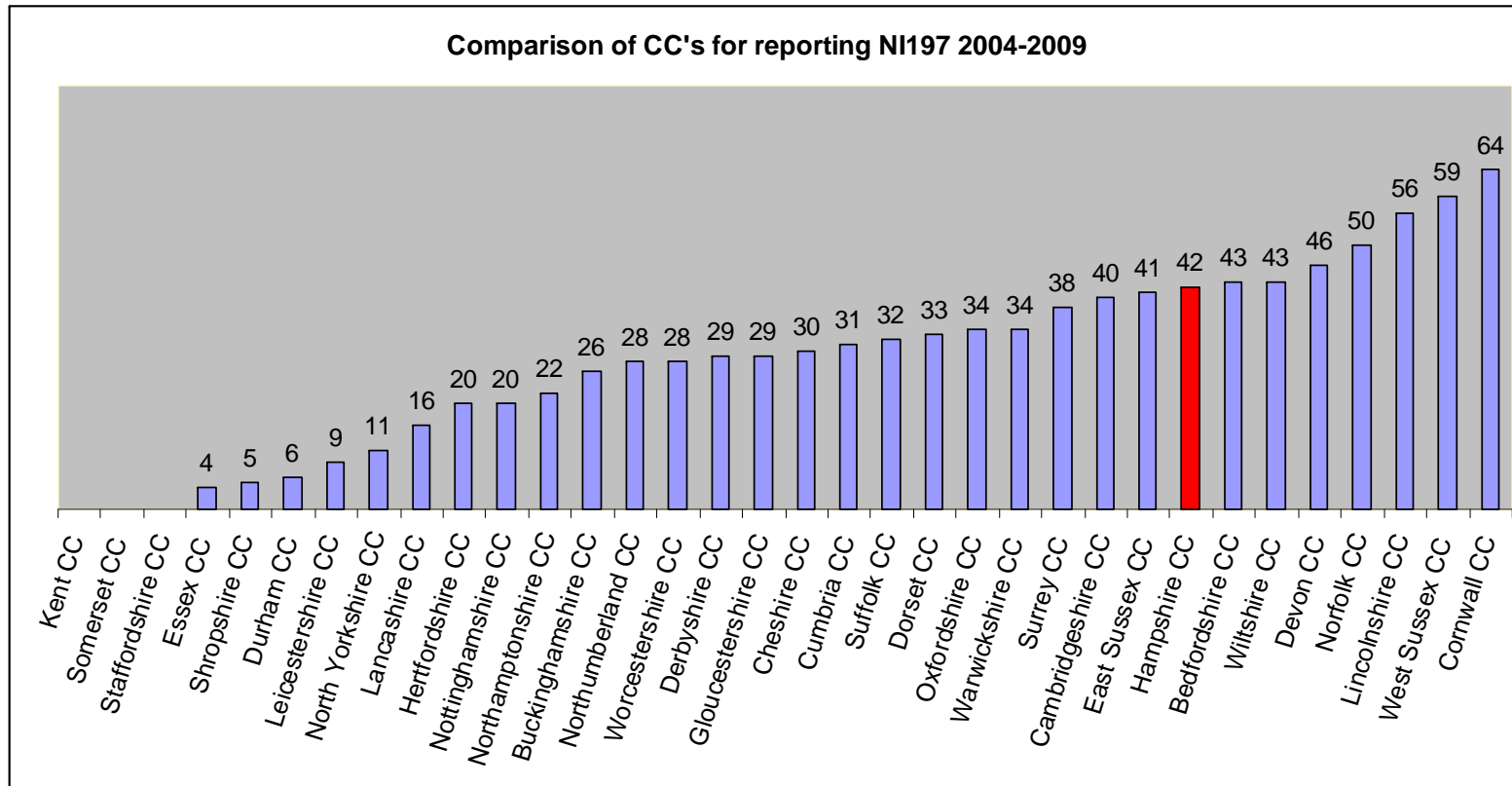
## NI 197 : Results for 2009 & 2010

---

	2009	2010
Number of SINC <sup>s</sup> in Hampshire*	3,757	3,787
No. of SINC <sup>s</sup> in +ve management	1,596 sites 42.48%	1,658 sites <b>43.80%</b>
No. of SINC <sup>s</sup> NOT in +ve management	215 sites 5.7%	265 sites 7.0%
No. of SINC <sup>s</sup> where management is unknown	1,946 sites 51.8%	1,864 sites 49.2%

\* Excluding Portsmouth and Southampton

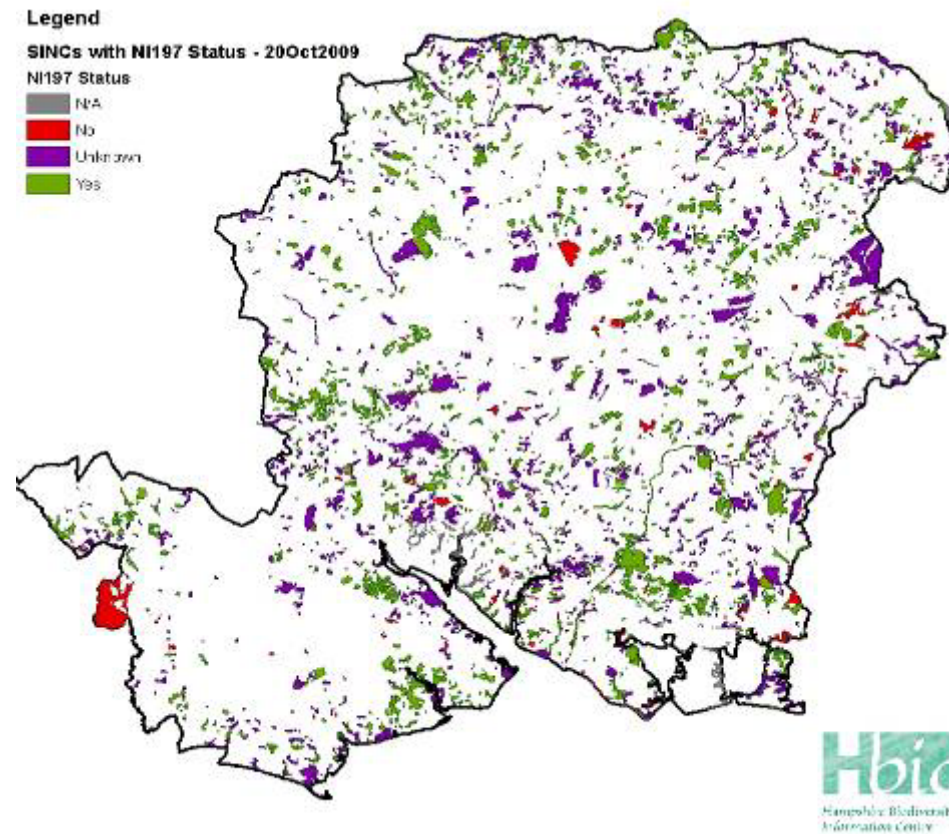
# NI 197 : Comparison of County Councils reporting for 2004-9



Breakdowns for Hants by District, habitat, size of site, ownership etc. are available

# NI 197 : Map of SINC's showing status

---





## NI 197 : Making a difference

---

We would like to see:

- a year on year increase in the indicator – target of 1%/yr
- a reduction in the ‘unknowns’
- more effective management of SINC’s on land controlled by Local authorities & other public bodies
- more effective targeting of agri-environment schemes & woodland grant schemes towards SINC’s
- continuing support for a proactive programme of providing land management advice and monitoring implementation of that advice
- More opportunities taken to manage, restore, enhance SINC’s within the planning system, alongside future developments



## NI 197 : Making a difference - examples

---

- New Forest Advice Service
- Meon Valley Partnership
- HCC – working to improve management of SINC's across its estate – county farms, schools, adult services, and Road Verges of Ecological Importance.
- HCC - Small Grants Scheme providing support to Parish & Town Councils in the management of SINC's
- Southampton CC working to put all parks & open spaces under EWGS or HLS and using NI197 to assist their LAA target of putting open spaces (including SINC's) into stable or improving condition
- Forestry Commission – Woodscape – a native woodland restoration programme in SE targeting woodland SINC's on their estate
- Test Valley – applying for HLS on it's SINC's & LNRs
- BAP Partners working to produce a strategy for next 2 years to take forward work on SINC's.



## References

---

Local Sites Guidance, Defra 2006

- <http://www.defra.gov.uk/rural/documents/protected/localsites.pdf>

NI 197 Guidance

- <http://www.defra.gov.uk/corporate/about/with/localgov/indicators/ni197.htm>

NERC Act ; S41 Habitats & Species of Principal Importance in England

- <http://www.naturalengland.org.uk/ourwork/conservation/biodiversity/protectandmanage/habsandspeciesimportance.aspx>