



HAMPSHIRE
BIODIVERSITY
PARTNERSHIP

achievements & future action



Biodiversity is essential for quality of life.
Hampshire is exceptionally rich in wildlife and the
Hampshire Biodiversity Partnership is taking action to
protect and enhance the natural environment for everyone.

www.hampshirebiodiversity.org.uk



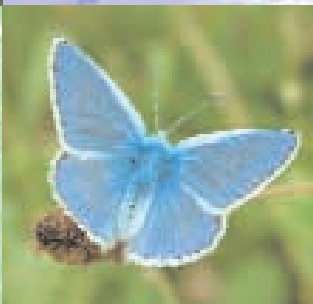
action for nature highlights

The Hampshire Biodiversity Partnership was established in 1997 to take action for Hampshire's biodiversity. The **Biodiversity Action Plan for Hampshire** was published in 1998 as a 10-year strategic plan.

Since that time almost 40 individual action plans have been produced for topics such as *Water and Biodiversity* and *Education Awareness and Involvement*, and for many priority habitats and species. The plans have been rigorous and wide-ranging and demonstrate the vision, expertise and commitment of the Partnership. The **Biodiversity Action Plan for Hampshire** has also inspired the production of many plans for wildlife at district level that set local priorities and involve the whole community in taking action.

This report of progress celebrates the substantial achievements of the Partnership in realising biodiversity objectives. There is a long history of expertise in nature conservation in Hampshire, but through working together we are delivering added value to conserving and enhancing the natural environment for wildlife and people.

Much has been achieved but there are still many challenges ahead. This report identifies key action for the future to reflect both national priorities and local concerns. We are particularly keen to engage a broader spectrum of people, to raise awareness of Hampshire's natural environment and increase commitment to its conservation.



Protecting habitats and species in Hampshire

Habitats

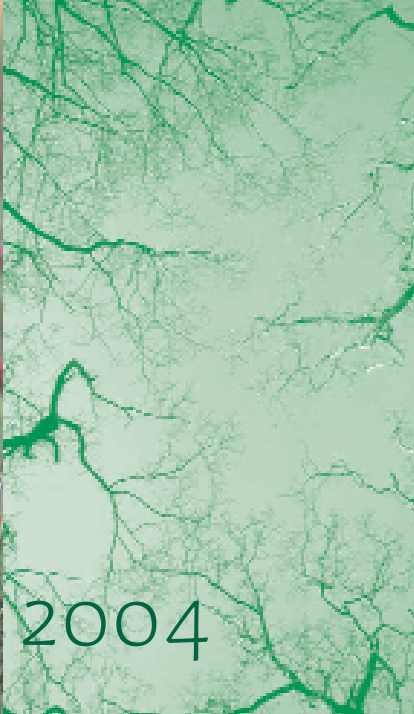
- 5 new statutory Local Nature Reserves (LNRs) have been declared by *Basingstoke and Deane Borough Council*.
- On behalf of its funding partners the *Hampshire Biodiversity Information Centre* (HBIC) have surveyed 1140 sites covering 11,267 hectares, primarily for planning and land management purposes. The data is used to monitor county Sites of Importance for Nature Conservation (SINCs) and Sites of Special Scientific Interest (SSSIs), to ensure sites are protected from development and managed appropriately, and to report on priority habitats. During this period a further 245 SINCs were identified and added to the list of 3,300 SINCs already recorded.
- The Habitat Management Advisory Project (jointly funded by *Hampshire Wildlife Trust* and *Hampshire County Council*) is notifying all owners of SINCs in Hampshire and offering assistance with management.
- Partnership projects established by *Hampshire County Council* (including the Hampshire Grazing Project, the Heathland Project and New Forest Life 3 Project) continue to be a primary focus for the management of priority habitats.
- *Hampshire County Council* and the *Forestry Commission* are jointly providing grant-aid for woodland management and supporting the coppice industry. About 700 hectares of woodland in Hampshire are now covered by management agreements.



- The *Hampshire Coppice Craftsmen Group* was formed in 2003 to represent the interests of coppice craftsmen and promote the practice and benefits of coppicing woodland.
- *Hampshire Wildlife Trust* and the *Environment Agency* have established a project to regenerate the Itchen Navigation.
- *Hampshire Wildlife Trust* have appointed staff to give advice to landowners and community groups in the New Forest, Test, Itchen, North East Hampshire, and Loddon / Eversley areas.
- The Tytherly Woods Project is a joint initiative between many Hampshire Biodiversity Partners, including the *Forestry Commission*, *Hampshire County Council*, *Butterfly Conservation*, the *National Trust* and others. A proposal for integrated management of this area will assist a wide-range of woodland species.
- 34 new 10-year agreements aimed at biodiversity conservation in Hampshire came into the *Department for Environment, Food and Rural Affairs (DEFRA)* Countryside Stewardship / Environmentally Sensitive Area schemes in 2003, and eight 10-year agreements were renewed.
- The Coastal Nature Conservation Group of the *Solent Forum* is prioritising and co-ordinating action for coastal biodiversity. Current priorities are the development of an integrated information and reporting system, a demonstration site for managed coastal realignment and raising awareness.
- To help safeguard Hampshire's mudflats and eelgrass beds, the *Solent European Marine Sites Partnership* have produced 'The Bait Collectors' Code'.
- *English Nature* is working in partnership with *Havant Borough Council* to restore areas of sand dune and vegetated shingle at Sinah Common SSSI and with *Portsmouth City Council* to restore chalk grassland at Portsdown Hill SSSI.

Species

- *Butterfly Conservation* and others are producing an up-to-date list of national and county notable butterfly and moth species.
- *The Hampshire Biodiversity Information Centre* and *Hampshire Wildlife Trust* are assisting the *Botanical Society of the British Isles* in producing a County Rare Plant Inventory.
- *Hampshire Ornithological Society* has published a summary of population changes shown by all water birds in the Solent in the 2002 Hampshire Bird Report.
- *Hampshire Ornithological Society* completed a countywide survey of corn buntings and yellow hammers in 2004.
- *Hampshire Amphibian and Reptile Group* has correlated the Hampshire results of the national Great Crested Newt appeal.
- *Hampshire Mammal Group* and *Hampshire Wildlife Trust* have carried out well-publicised surveys of dormice in 2001 and 2003 and published a report on the status of the dormouse in Hampshire.
- *Hampshire Wildlife Trust* have co-ordinated survey work covering Hampshire priority species such as nail fungus, southern damselfly, red-tipped cudweed, the Gilkicker weevil, otter and water vole.
- *Hampshire Bat Group* runs approximately 100 events each year, including walks, talks, surveys and training sessions.
- Hampshire is leading the UK's research into the habitat requirements of the two types of Pipistrelle Bat.
- *English Nature* has declared a Site of Special Scientific Interest (SSSI) to help protect the nationally rare barbastelle bat in woodland owned by the *National Trust* at Mottisfont, Test Valley.



highlights 2002 – 2004

Data and information

- The *Hampshire Biodiversity Information Centre* (HBIC) was established in April 2002 and is hosted by *Hampshire County Council*. HBIC collects, manages, analyses and disseminates data on habitats and species to local authorities, Government agencies, voluntary organisations, consultants and individuals. Almost the entire work programme of HBIC www.hants.gov.uk/biodiversity/hbic contributes directly to achieving core targets in the ***Biodiversity Action Plan for Hampshire***.
- *Hampshire Wildlife Trust* uses MapMate as its main species database and now has access to almost 24,000 records of nearly 400 species of priority concern in Hampshire.

Implementation, monitoring and reporting

- The Partnership worked closely with *English Nature* on a prototype database for monitoring targets in local biodiversity action plans. This has now evolved into the national Biodiversity Action Reporting System (BARS).
- An Implementation and Reporting Strategy was formulated by the Partnership's Steering Group in July 2003 to identify priority areas for action. Each action plan has a lead agency or forum to oversee its implementation. Topic groups have been established to oversee major areas of the Partnership's work.

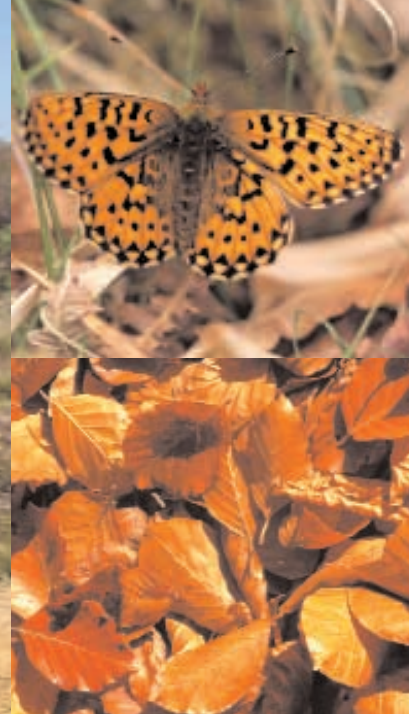
Awareness and understanding

- The *Hampshire Biodiversity Partnership* website went online in April 2003 www.hampshirebiodiversity.org.uk
- Key publicity campaigns for biodiversity mounted by Partners:
 - Wildlife-friendly farming awards**
National Farmers Union / Country Land and Business Association
 - Business Environment Awards**
Hampshire and Isle of Wight Business Environment Forum
 - 'Your Hampshire' (courses to introduce people to visiting the countryside and watching wildlife) and numerous training courses and workshops as part of HWT's life-long learning programme *Hampshire Wildlife Trust*
 - Wood Week and Heath Week**
Hampshire County Council

Local biodiversity action plans and strategies

- The Partnership has raised the profile of biodiversity and this has resulted in improved commitment in development plans and community strategies in Hampshire. For example, biodiversity objectives have been included in the Southampton Community Strategy published in 2004.
- Local biodiversity action plans or strategies have been produced in several districts and other areas such as the Loddon Catchment and Hook Parish.
- *Hampshire County Council* is preparing a Corporate Biodiversity Action Plan to plan, prioritise and further develop activity for biodiversity. Other organisations are also responding to the ***Biodiversity Action Plan for Hampshire*** by reviewing their work programmes to ensure delivery of action for biodiversity.

Hampshire biodiversity topic groups



Each habitat or species plan in the **Biodiversity Action Plan for Hampshire** has a champion to oversee progress.

However there are key topics common to many plans. Topic Groups share expertise and progress initiatives that will help achieve biodiversity targets across the county:

Local Authority Biodiversity Forum

The Forum has identified several priority issues including development control and forward planning, raising awareness and community strategies. The Forum was established in April 2003 and is currently producing guidance on biodiversity and development.
Contact: ian.barker@southampton.gov.uk

Land Management Advisors Forum

Established in May 2004, this topic group is focussing on issues such as co-ordination of advice and promotion of support schemes and projects. The Forum is currently auditing the outcome of land management schemes and projects on the ground.
Contact: damian.offer@hants.gov.uk

Hampshire Biodiversity Information Centre (HBIC)

All actions in the **Biodiversity Action Plan for Hampshire** relating to data and information are overseen by HBIC. There are more than 7000 site records, 400,000 species records and 20,000 mapped habitat parcels on the HBIC database.
Contact: nicky.court.hbic@hants.gov.uk

Hampshire Biodiversity Research Forum

This Forum will be launched in early 2005 with the objectives of implementing research needs identified in the **Biodiversity Action Plan for Hampshire** and co-ordinating research in conjunction with educational and research institutions. Contact: DavidR@hwt.org.uk.

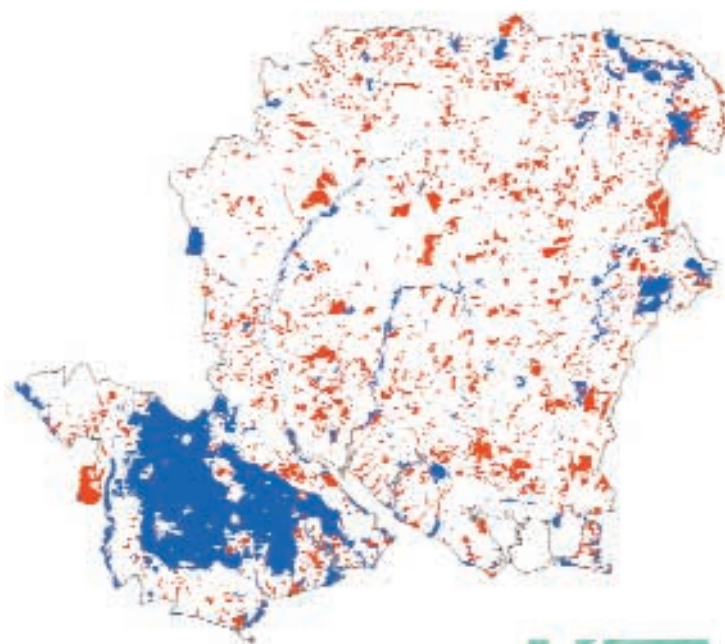
Monitoring and Reporting Group

The Group is considering several aspects of monitoring biodiversity action in Hampshire: links with national biodiversity reporting;

progress of projects that have county-wide significance for monitoring changes in biodiversity; and tracking and reporting progress with actions in the **Biodiversity Action Plan for Hampshire**. The Group was established in July 2004.
Contact: jacklyn.johnston@hants.gov.uk

Nature in Hampshire: designated sites

- **County** (Sites of Importance for Nature Conservation – SINCs)
- **National** (Sites of Special Scientific Interest – SSSIs)
Many SSSIs are also of International importance (Special Protection Areas – SPAs, candidate Special Areas of Conservation Importance – cSACs, and Ramsar Sites)



© Crown Copyright 2005 HCC 100019180
Reproduced from the Ordnance Survey map with the permission of the controller of her Majesty's Stationery Office



action for nature



The *Hampshire Biodiversity Partnership* is taking stock and assessing overall goals and priorities for conserving Hampshire's biodiversity. The national biodiversity process is driven by the ambitious target of halting loss of biodiversity by 2010. In Hampshire we are fully committed to this target and will be reporting on the 'State of the Environment' in Hampshire in 2005 (interim report) and 2010 (full report).

The ***Biodiversity Action Plan for Hampshire*** is comprehensive and sets out a detailed programme of action to conserve our most threatened habitats and species. There is an enormous volume of work being undertaken by Hampshire Biodiversity Partners.

Monitoring success in achieving our goals is complex. To simplify monitoring, the Partnership has embarked on a process of identifying strategic objectives and indicators to track progress. A review of individual actions contained within the ***Biodiversity Action Plan for Hampshire*** illustrates that key activity falls within 15 or 20 core topics. The Partnership's wide range of work will be reported against these.

The Partnership's priorities for 2005 to 2007 include influencing strategic issues, developing monitoring and reporting, and promoting understanding:

Strategic issues

Incorporating policies for biodiversity into plans and strategies is vital for conserving habitats and species on the ground. There are several key strategic issues:

- Hampshire's Community Strategy 'Shaping our Future Together' acknowledges that access to Hampshire's open spaces promotes healthy lifestyles and that "the Hampshire Biodiversity Partnership is working



to protect and manage the natural environment". Hampshire Biodiversity Partners will continue to strive to incorporate biodiversity objectives into all community strategies in Hampshire.

- Each district or unitary authority must prepare a Local Development Framework (LDF) by 2007. These statutory documents will guide development in Hampshire and it is important that they contain comprehensive policies for conserving and enhancing biodiversity.
- Sub-regional Strategies are being prepared for two areas of Hampshire – ‘South Hampshire’ and the ‘Western Corridor’ in the north-east. The challenge will be to protect and enhance biodiversity while accommodating significant development.
- New agri-environment schemes will be rolled-out nationwide from 2005. This and other support for rural land management is key to ensuring the conservation of Hampshire’s biodiversity. The Partnership has a role in enhancing co-ordination of rural land management schemes.

Monitoring and reporting

- The Partnership will refine and agree a list of 15 to 20 core topics to help track progress.
- The national Biodiversity Action Reporting System (BARS) is now available and training in BARS will be given to all local biodiversity partnerships during spring 2005. The first full review of the UK Biodiversity Action Plan takes place in 2005 and will incorporate information from local biodiversity action plans. The Partnership will provide data on priority habitats and species in Hampshire.

- *Hampshire County Council* has initiated and is overseeing a project to track the success of forward planning and development control in conserving the county’s biodiversity.
- The *Land Management Advisors Forum* is assessing the collective outcome of management advisory projects in Hampshire. This will help to identify the extent of achievement and additional opportunities.
- The *Hampshire Biodiversity Information Centre* will develop an interim ‘State of the Environment’ Report for Hampshire in 2005 and full report in 2010.

Promoting understanding

- The Partnership website will be updated and expanded.
- The *Hampshire Biodiversity Information Centre* will be submitting a bid to the Heritage Lottery Fund to develop the centre to reach new audiences such as schools.
- The Partnership will increase links with business and industry through the *Hampshire and Isle of Wight Business Environment Forum* and promotion of *The Wildlife Trusts’ Biodiversity Benchmark* scheme.
- *Hampshire County Council* in association with the *Hampshire Biodiversity Partnership* will mount a publicity campaign in 2006 for raising awareness of nature.



Biodiversity Action Plans in Hampshire

Hampshire Biodiversity Partnership
*Biodiversity Action Plan for Hampshire:
Volume One* 1998
*Biodiversity Action Plan for Hampshire:
Volume Two* 2000 – 2004

Basingstoke and Deane Borough Council
*Living Landscapes: A Landscape and Biodiversity
Strategy for the Borough of Basingstoke
and Deane* 2004

East Hampshire District Council
Biodiversity Action Plan for East Hampshire 2002

Eastleigh Borough Council
*Wild About Eastleigh:
A biodiversity action plan for the borough* 2002

Fareham Borough Council
A Local Biodiversity Action Plan for Fareham 2003

Hampshire County Council
*Conserving Nature for the Community:
Corporate Biodiversity Action Plan 2005 – 2008*
(due 2005)

Southampton City Council
The Nature Conservation Strategy for Southampton
1992 (revision in progress)

Winchester City Council
Winchester City Council Biodiversity Action Plan
(due 2005)

Hampshire Biodiversity Partnership: Action for Wildlife and People

The Hampshire Biodiversity Partnership is a group of public and voluntary organisations taking action for wildlife and people. The Partnership includes local authorities, Government agencies and voluntary bodies working together to conserve and enhance nature in Hampshire.

A full list of individual action plans published as part of the **Biodiversity Action Plan for Hampshire** is available at www.hampshirebiodiversity.org.uk/action.html

For information on the **Hampshire Biodiversity Partnership** and **Biodiversity Action Plan for Hampshire** contact Jacklyn Johnston jacklyn.johnston@hants.gov.uk

Basingstoke and Deane Borough Council, British Trust for Conservation Volunteers, Butterfly Conservation, Country Land and Business Association, Countryside Agency, Defence Estates, Department for Environment Food and Rural Affairs, East Hampshire AONB, East Hampshire District Council, Eastleigh Borough Council, English Nature, Environment Agency, Fareham Borough Council, Farming and Wildlife Advisory Group, Forestry Commission, Game Conservancy Trust, Gosport Borough Council, Government Office for the South East, Hampshire Association of Parish and Town Councils, Hampshire and Isle of Wight Business Environment Forum, Hampshire County Council, Hampshire Ornithological Society, Hampshire Wildlife Trust, Hart District Council, Havant Borough Council, National Farmers Union, New Forest District Council, Portsmouth City Council, Royal Society for the Protection of Birds, Rushmoor Borough Council, Southampton City Council, Test Valley Borough Council, Winchester City Council

UK BIODIVERSITY



VARIETY OF LIFE

Picture credits

Tony Blunden, Alex Cruickshank, Natasha Free, Chris Gomersall/rspb-images.com, Hampshire County Council, Andy Hay/rspb-images.com, Nick Heasman, Tim Holzer/EA, Jacklyn Johnston, John Markham/rspb-images.com, Phil McLean/HWT, Damian Offer, Mary Padden, David Pape, Jonathan Rau, Ray Smith, Sue Tinkler, Andrew Walmsley

www.hampshirebiodiversity.org.uk